

NC 24/ NC 87 Widening

From NC 24 in Spout Springs to SR 1117 (Nursery Road)

Local ID: H150694-A

Purpose: Congestion

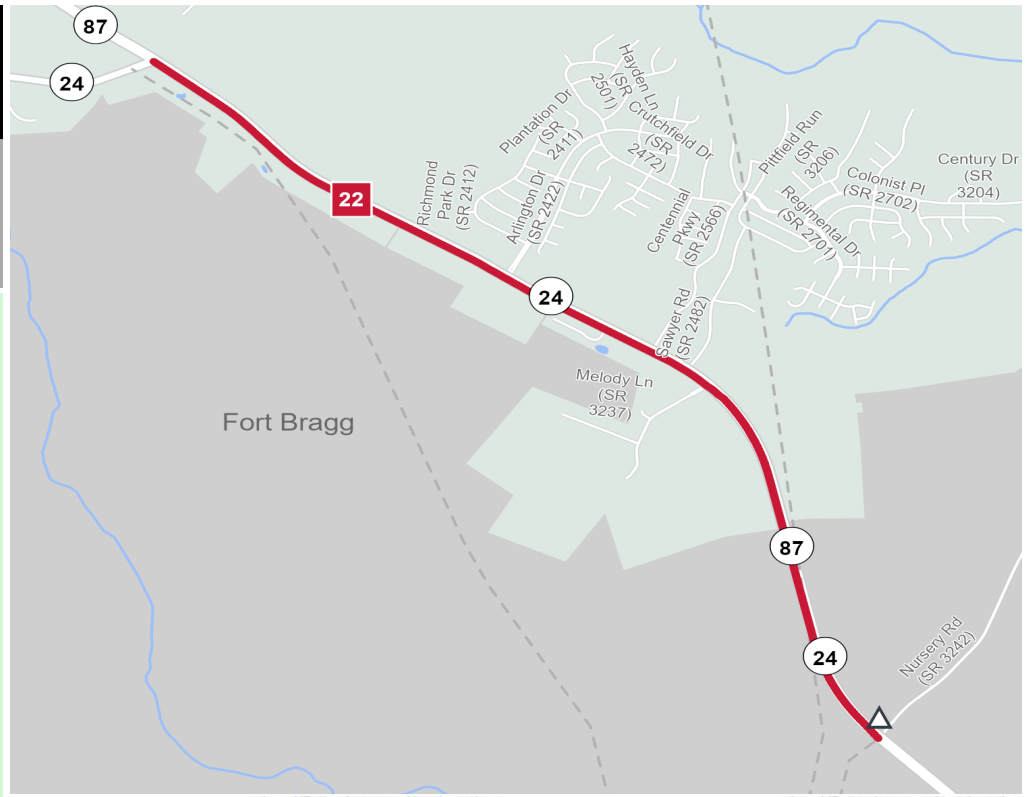
Improvement: Widening

Identified Need

This project, NC 24/ NC 87 From NC 24 in Spout Springs to SR 1117 (Nursery Road), is projected to be over capacity by year 2045. Improvements are needed to accommodate projected traffic volumes such that LOS D can be achieved.

Recommendation

The proposal is to widen from 4 Lane with Median - Partial Control to 6B- 6 Lane Divided (27' Median with Jersey Barrier with Paved Shoulders, 55-70mph



Proposal At A Glance

Highway Class	Congestion & Mobility
Facility Type	Expressway
Typical Section	06 B
Section Options	-
Length (miles)	3.80
Existing ROW (feet)	30-150
Safety Risk Score	33-78

Proposal Data: 2018 Base Year 2045 Future Year

Improved Route	Existing	Without Proposal	With Proposal
Facility Type	Expressway	Expressway	Expressway
Travel Lanes	4	4	6
Volume (vpd)	40500	54000-55800	52400-54200
Capacity (vpd)	33500-50100	33500-50100	71200

Capacity Data: Year

Facility will be Approaching Capacity (>80%)	-
Facility will be Over Capacity (>=100%)	-

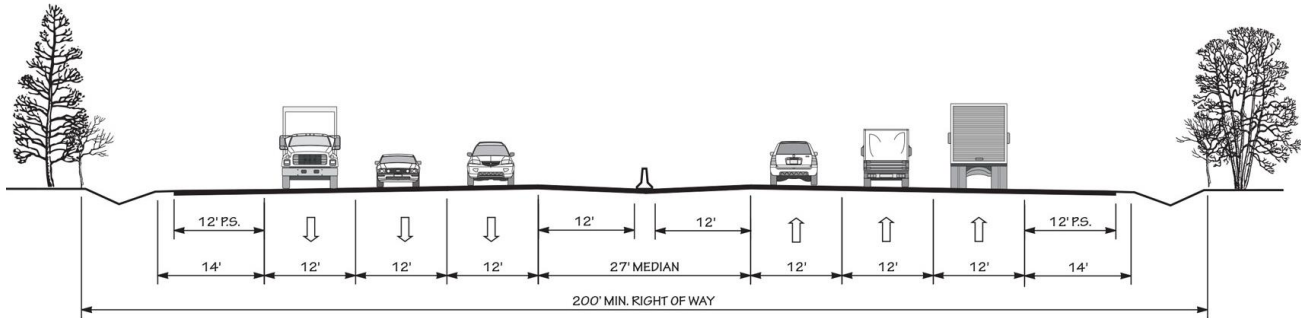


Typical Section Options:

None

TYPICAL SECTION No. 6B

6 LANE DIVIDED (27' MEDIAN WITH JERSEY BARRIER)
WITH PAVED SHOULDERS



POSTED SPEED 55-70 MPH

Project History/Linkage to Other Plans

Linkage to other plans

The project (H150694-A & H150694-B) are in close proximity to TIP U-5930. U-5930 is an interchange project.

Linkage to Other Plans

The proposed project is consistent with local and regional development goals and plans, such as the FAMPO 2045 MTP, adopted in 2019. It was also part of NCDOT Spot 5.0

CTP Goal Analysis

Vision, Goals, & Objectives

The purpose of this project is to reduce congestion, reduce travel time, and improve safety along this facility. The Cumberland County / FAMPO CTP Goals include focusing on growth around established municipalities, infrastructure, and strategic nodes while encouraging safe, multi-modal transportation options with adequate connectivity. Additionally Cumberland County / FAMPO CTP goals strive to protect, preserve, and enhance environmental features and open space opportunities in conjunction with recognizing the strategic importance of military installations within and adjacent to the community and promoting economic development growth through transportation and planning means.

Goals & Objectives Survey

H150694-A project received no comments during the survey period. The Survey was launched on August 12, 2020 and closed on September 28, 2020. There was an English and Spanish version of the survey. A total of 228 participants created 530 comments / suggestions on the map of Cumberland County / FAMPO.

Potential Impacts

Project R-2529 - Proposed widening of NC 24/NC 27 from Carthage Bypass to NC 87 in Harnett / Moore County is in

close proximity to H150694-A project. The feasibility study can be view [HERE](#)

Additional Information - Environmental

This project is within 150 feet of:

- River(s) and Stream(s)
- Land Habitat Indicator Guild(s)
- Managed Area(s)
- National Wetlands Area(s)
- National Heritage Significant Area(s)

Additional Information - Title VI

This recommendation passes through one or more Census Blocks with the following characteristics:

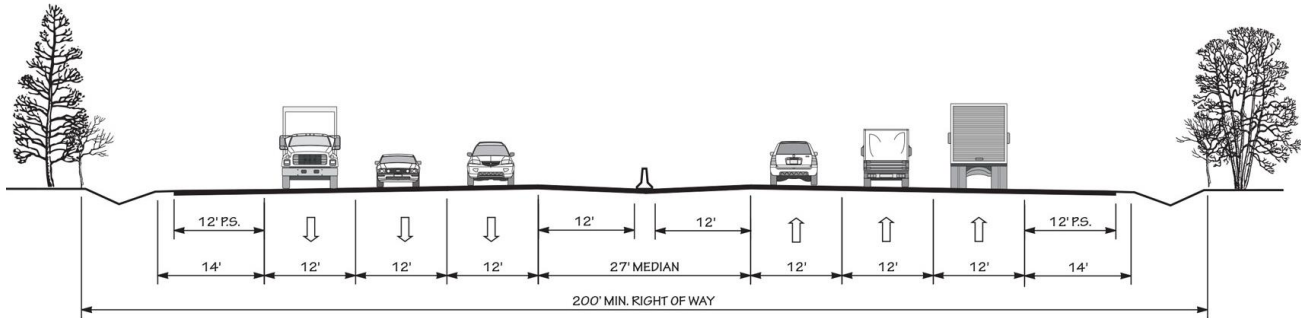
- Between 0% and 25% identify as African American
- Between 0% and 25% identify as 65+
- Between 0% and 5% identify as Asian
- Between 0% and 1% identify as Hawaiian or Pacific Islander
- Between 25% and 50% identify as Hispanic and Latino
- Between 0% and 5% identify as Over 18 w/ Limited English Proficiency (LEP) - Asian and Pacific Islander
- 0% identify as Over 18 w/ Limited English Proficiency (LEP) - Indo-European
- 0% identify as Over 18 w/ Limited English Proficiency (LEP) - Other
- 0% identify as Over 18 w/ Limited English Proficiency (LEP) - Spanish
- Between 0% and 15% identify as Native American
- Between 15% and 25% identify as Below Poverty Line

Typical Section Options:

None

TYPICAL SECTION No. 6B

6 LANE DIVIDED (27' MEDIAN WITH JERSEY BARRIER)
WITH PAVED SHOULDERS



POSTED SPEED 55-70 MPH

- Between 10% and 15% identify as Some Other Race
- Between 5% and 10% identify as Two of More Races
- 0% identify as Households with No Car